



SafeRack[®]
ORANGE. SAFETY HAS A NEW COLOR.



Test EQ

Test Name

Chuck Cohen
Test Street
Myrtle Beach, SC 29577
USA

Quote #SA-1996

August 14, 2014

SafeRack

730 Electric Drive Sumter, SC 29153 | Phone (866) 761-7225 | info@saferack.com | <http://www.saferack.com/>



Quote #: SA-1996

Date: Aug 14, 2014

To: Chuck Cohen
Test Name
Test Street
Myrtle Beach, SC 29577
USA

From: Ernie Quinque
Director of Sales
SafeRack
730 Electric Drive
Sumter, SC 29153 USA
(866) 761-7225
erniequinque@gmail.com

Thank you for your inquiry.

If you have any further questions please get in touch.



Summary

Prices valid until Sept. 13, 2014


Items Subtotal	\$	54,615.64
Add Freight	\$	0.00
Add Tax	\$	0.00
TOTAL	\$	54,615.64

Quote Details

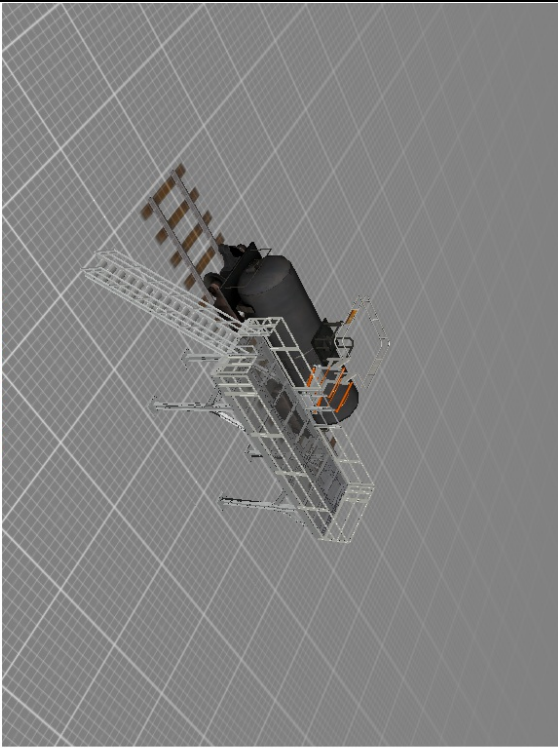
Test EQ

Item	Part # / SKU	Description	Unit Price	QTY.	Extended Price
No Image	70001	Modified Long Platform 4'-0"W x 26'-6"L; Hot Dipped Galvanized Steel Construction; Bar Grating	\$ 9,328.00	2	\$ 18,656.00
No Image	2LEGSUPPORT-12	Two Leg Support for 12' 0" [CUSTOM ONLY] Platform Support (a.k.a. two leg support) for 12' 0"	\$ 3,786.67	2	\$ 7,573.34
	12083	FRT-24-5A ALUMINUM FLAT RAMP TELESCOPING G4) FRT - FLAT RAMP WITH TELESCOPING END SAFE ACCESS GANGWAY* SINGLE PIECE PATENTED "U" Body Frame Support Design is stamped and formed from one integral, continuous, unbroken piece of aluminum - all structural welding eliminated in areas of high load concentration; no structural welds that could break* Molded, ergonomically crafted handle allows for easy positioning of the 21" extension which eliminates gaps* Two (2) oversized 1" diameter solid stainless steel pivot rods with pivoting bushings at all load bearing pivots for unmatched strength, long life and a more solid walk surface* High strength spring counterbalance mechanism ensures easy operation of system for any and all operators * Over-travel stops with rubber bumpers provide a "smooth, soft, and buffered" return of the gangway if retracted with strong force* Outboard gangway uprights are 2" x 4" tube that increases load bearing capabilities which provides a stronger, safer support for the cage assembly * Manufactured, stamped, and formed components along with CNC machined pivot points with .004 tolerances ensures reduced wear and repeatable quality * Patented foot lock design offers improved reliability over other designs for many years of trouble free operation* Basetread uprights comes standard hot dipped galvanized steel construction, but is available in stainless steel* Laser keyed upright chain stay design helps keep chains untangled around foot lock and lift rope along with increasing the systems strength* Unit is self-supporting and has a 500 lb load capacity	\$ 7,324.00	1	\$ 7,324.00
	12707	24" CARRIAGE (MOUNTED TO GWY W/ HDWR LISTED IN GWY) TRACK MOUNT CARRIAGE* Mounts onto a 24" (609 mm) wide gangway* Galvanized steel construction	\$ 1,872.00	1	\$ 1,872.00
No Image	367GL	TRACK 6'-0" WITH SWING GATES * Bolt-on design* 6'-0"" (1,828 mm) track with uprights* 3'-0"" (914 mm) wide swing gates (some assembly required)* Galvanized steel construction"	\$ 2,225.00	1	\$ 2,225.00
No Image	12548	CAGE 8' X 8' 2R W/17" BUMPOUT FOR 24" AL GANGWAY W/ HARDWARE SAFETY CAGE* 8'-0\ (2438 mm) x 8'-0\ (2438 mm)* Two rails deep (12\ / 305 mm)* 1-1/2\ Sch 10 Pipe* All welded construction* Aluminum construction	\$ 1,915.00	1	\$ 1,915.00

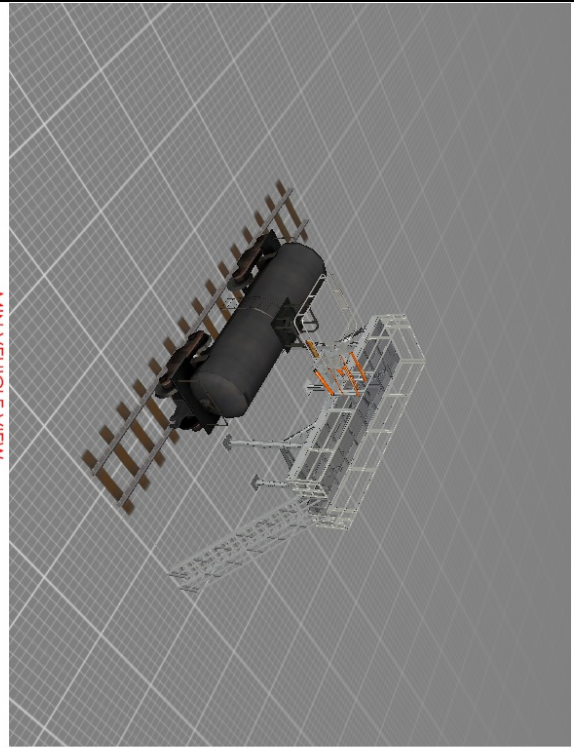
	12759	STAIR UNIT 12'-0" WITH HARDWARE STAIR UNIT* 12'-0" (3,200 mm) high stair unit - 2'-6" wide (762 mm), OSHA compliant 9/9 rise and run* 2" square tubing handrail* Designed to carry safely a moving concentrated load of 1,000#, a concentrated load of 300 # (164 kg) on a 4 sq/in (101 sq/mm) area of stair and a uniform load of 100 psf* Galvanized Steel Construction	\$ 5,707.00	1	\$ 5,707.00
No Image	70002	Modified Handrail HANDRAIL * 42" (1,067 mm) tall handrail, midrail, and toeboard * 2" square tubing* Designed to resist a load of 50 plf applied in any direction and a single concentrated load of 200 # applied in any direction* Handrail Length 1'-2.5" * Galvanized Steel Construction	\$ 590.33	1	\$ 590.33
No Image	70002	Modified Handrail HANDRAIL * 42" (1,067 mm) tall handrail, midrail, and toeboard * 2" square tubing* Designed to resist a load of 50 plf applied in any direction and a single concentrated load of 200 # applied in any direction* Handrail Length 1'-0.5" * Galvanized Steel Construction	\$ 525.33	2	\$ 1,050.66
No Image	70002	Modified Handrail HANDRAIL * 42" (1,067 mm) tall handrail, midrail, and toeboard * 2" square tubing* Designed to resist a load of 50 plf applied in any direction and a single concentrated load of 200 # applied in any direction* Handrail Length 0'-9.5" * Galvanized Steel Construction	\$ 525.33	1	\$ 525.33
	12714	HANDRAIL 1'-1 1/2" WITH HARDWARE (ANGLE CLIP) HANDRAIL * 42" (1,067 mm) tall handrail, midrail, and toeboard * 2" square tubing* Designed to resist a load of 50 plf applied in any direction and a single concentrated load of 200 # applied in any direction* Handrail Length 1' 1-1/2" / 343 mm * Galvanized Steel Construction	\$ 442.00	3	\$ 1,326.00
No Image	70002	Modified Handrail HANDRAIL * 42" (1,067 mm) tall handrail, midrail, and toeboard * 2" square tubing* Designed to resist a load of 50 plf applied in any direction and a single concentrated load of 200 # applied in any direction* Handrail Length 5'-9.5" * Galvanized Steel Construction	\$ 623.33	3	\$ 1,869.99
No Image	70002	Modified Handrail HANDRAIL * 42" (1,067 mm) tall handrail, midrail, and toeboard * 2" square tubing* Designed to resist a load of 50 plf applied in any direction and a single concentrated load of 200 # applied in any direction* Handrail Length 4'-3.5" * Galvanized Steel Construction	\$ 615.33	1	\$ 615.33
No Image	70002	Modified Handrail HANDRAIL * 42" (1,067 mm) tall handrail, midrail, and toeboard * 2" square tubing* Designed to resist a load of 50 plf applied in any direction and a single concentrated load of 200 # applied in any direction* Handrail Length 4'-1.5" * Galvanized Steel Construction	\$ 615.33	1	\$ 615.33

	12690	HANDRAIL 5'-10 1/2" WITH HARDWARE (ANGLE CLIP) HANDRAIL * 42" (1,067 mm) tall handrail, midrail, and toeboard * 2" square tubing* Designed to resist a load of 50 plf applied in any direction and a single concentrated load of 200 # applied in any direction* Handrail Length 5' 10-1/2"/1,791 mm* Galvanized Steel Construction	\$ 540.00	4	\$ 2,160.00
No Image	70002	Modified Handrail HANDRAIL * 42" (1,067 mm) tall handrail, midrail, and toeboard * 2" square tubing* Designed to resist a load of 50 plf applied in any direction and a single concentrated load of 200 # applied in any direction* Handrail Length 1'-3.5" * Galvanized Steel Construction	\$ 590.33	1	\$ 590.33
Subtotal					\$ 54,615.64
Add Freight					\$ 0.00
Add Tax					\$ 0.00
TOTAL					\$ 54,615.64

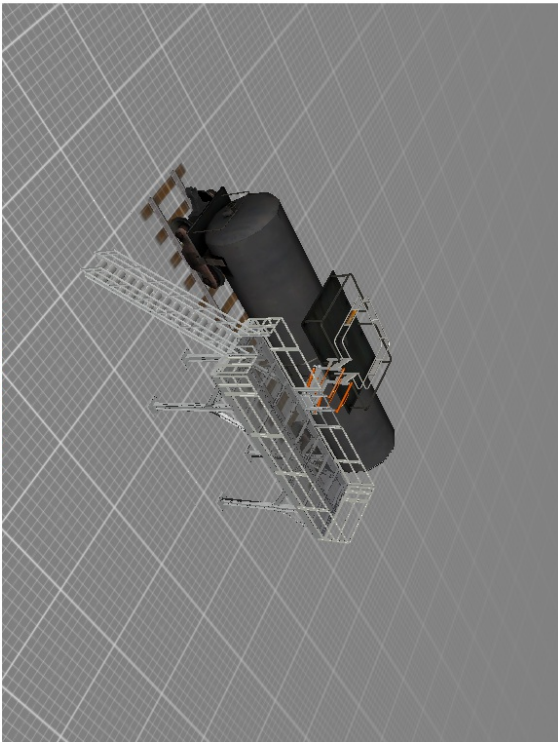
MIN VEHICLE VIEW
GANGWAY SHOWN IN WORKING POSITION



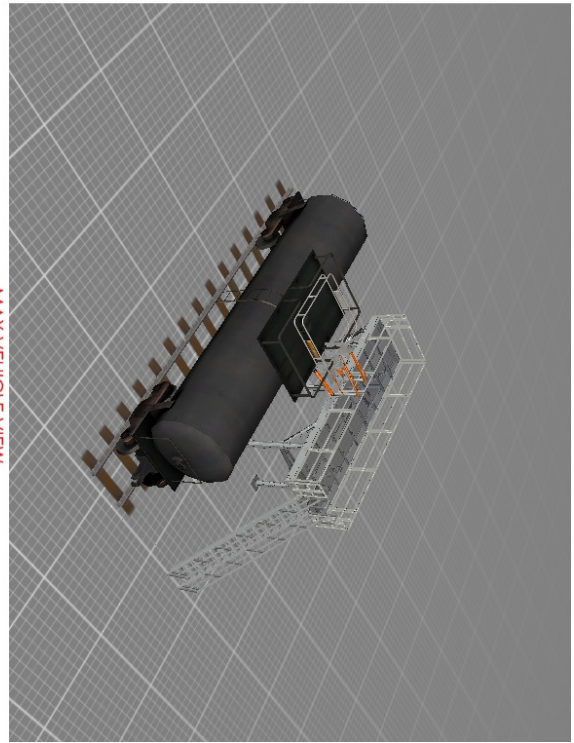
MIN VEHICLE VIEW
GANGWAY SHOWN IN WORKING POSITION



MAX VEHICLE VIEW
GANGWAY SHOWN IN WORKING POSITION



MAX VEHICLE VIEW
GANGWAY SHOWN IN WORKING POSITION



SafeRack[®]
ORANGE. SAFETY HAS A NEW COLOR.

730 Electric Drive,
Sumter, SC 29153

DRAWN BY

Ernie Quinque

APPROVAL (SIGNATURE)

ALL INFORMATION CONTAINED
HEREIN IS CONFIDENTIAL AND
PROPRIETARY AND MAY NOT BE
DISCLOSED IN ANY FORM
WITHOUT PRIOR WRITTEN
CONSENT OF SAFERACK

TITLE

Multiple Perspectives

QUOTE #

SA-1996

CUSTOMER

Test Name

SHEET

1

REV

1



SafeRack[®]
ORANGE. SAFETY HAS A NEW COLOR. LLC

730 Electric Drive,
 Sumter, SC 29153

DRAWN BY

Ernie Quinque

APPROVAL (SIGNATURE)

ALL INFORMATION CONTAINED
 HEREIN IS CONFIDENTIAL AND
 PROPRIETARY AND MAY NOT BE
 DISCLOSED IN ANY FORM
 WITHOUT PRIOR WRITTEN
 CONSENT OF SAFERACK

TITLE

Single Perspective

QUOTE #

SA-1996

CUSTOMER

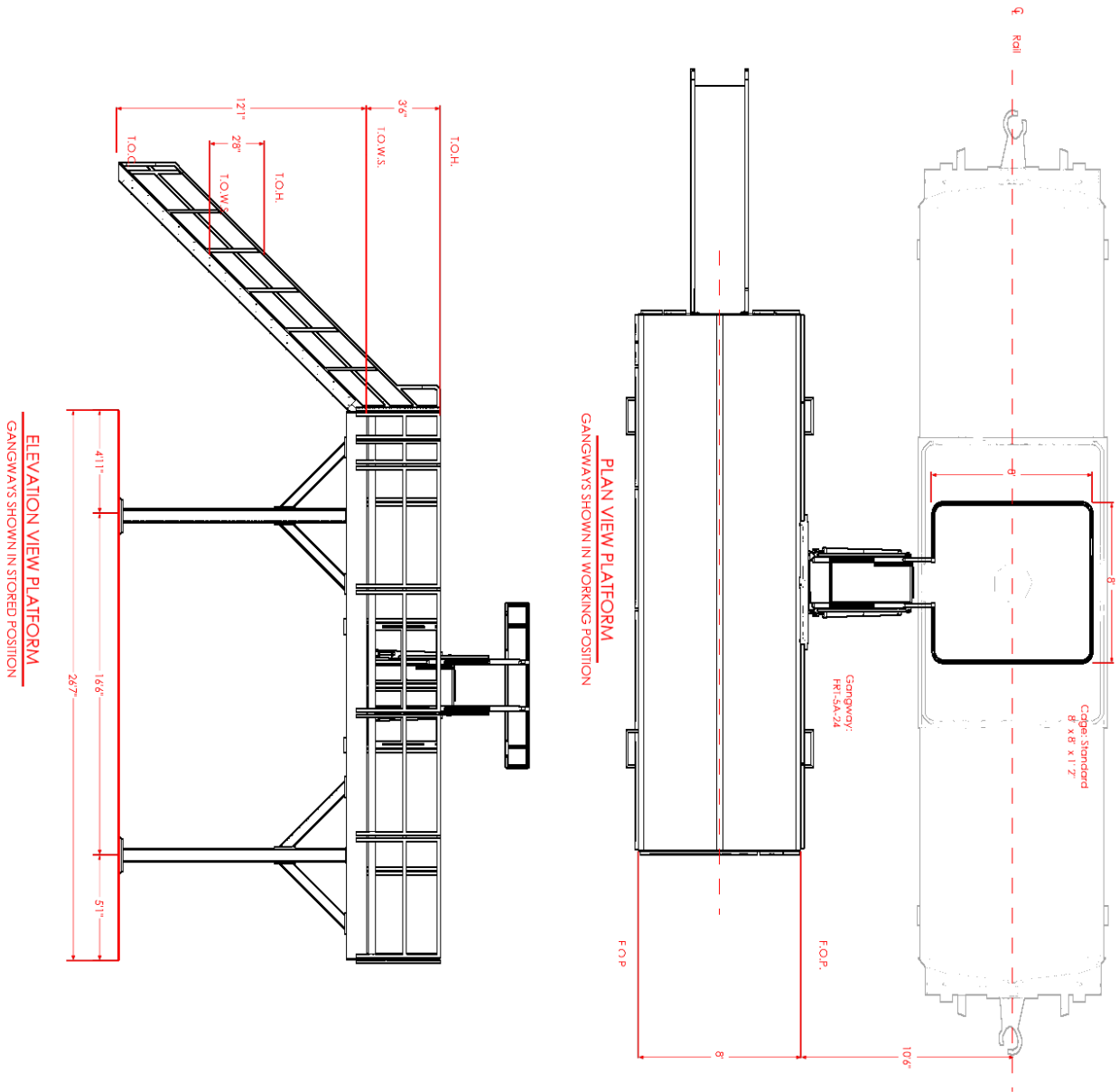
Test Name

SHEET

2

REV

1



730 Electric Drive,
Sumter, SC 29153

DRAWN BY

Ernie Quinque

APPROVAL (SIGNATURE)

ALL INFORMATION CONTAINED
HEREIN IS CONFIDENTIAL AND
PROPRIETARY AND MAY NOT BE
DISCLOSED IN ANY FORM
WITHOUT PRIOR WRITTEN
CONSENT OF SAFERACK

TITLE

Plan & Elevation View Tower

QUOTE #

SA-1996

CUSTOMER

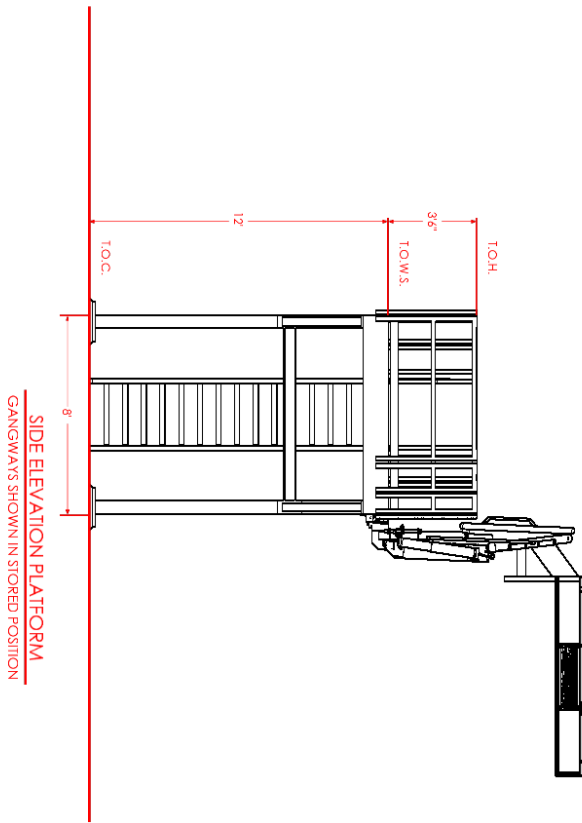
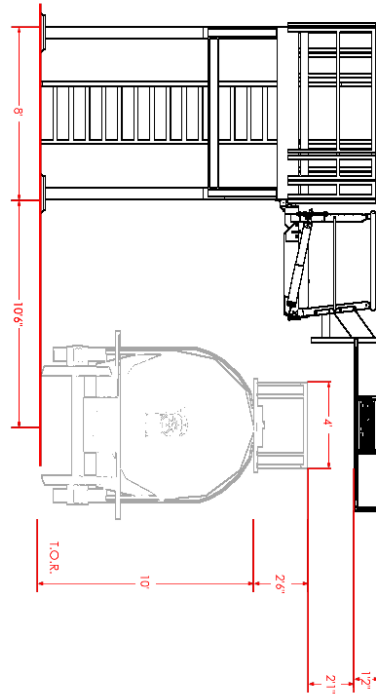
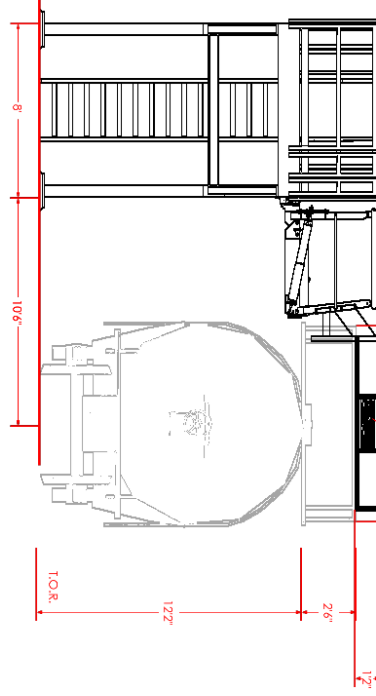
Test Name

SHEET

3

REV

1



SafeRack^{LLC}
ORANGE. SAFETY HAS A NEW COLOR.

730 Electric Drive,
Sumter, SC 29153

DRAWN BY

Ernie Quinque

APPROVAL (SIGNATURE)

ALL INFORMATION CONTAINED
HEREIN IS CONFIDENTIAL AND
PROPRIETARY AND MAY NOT BE
DISCLOSED IN ANY FORM
WITHOUT PRIOR WRITTEN
CONSENT OF SAFERACK

TITLE

**Cross Sections (Gangways Working and
Stored)**

QUOTE #

SA-1996

CUSTOMER

Test Name

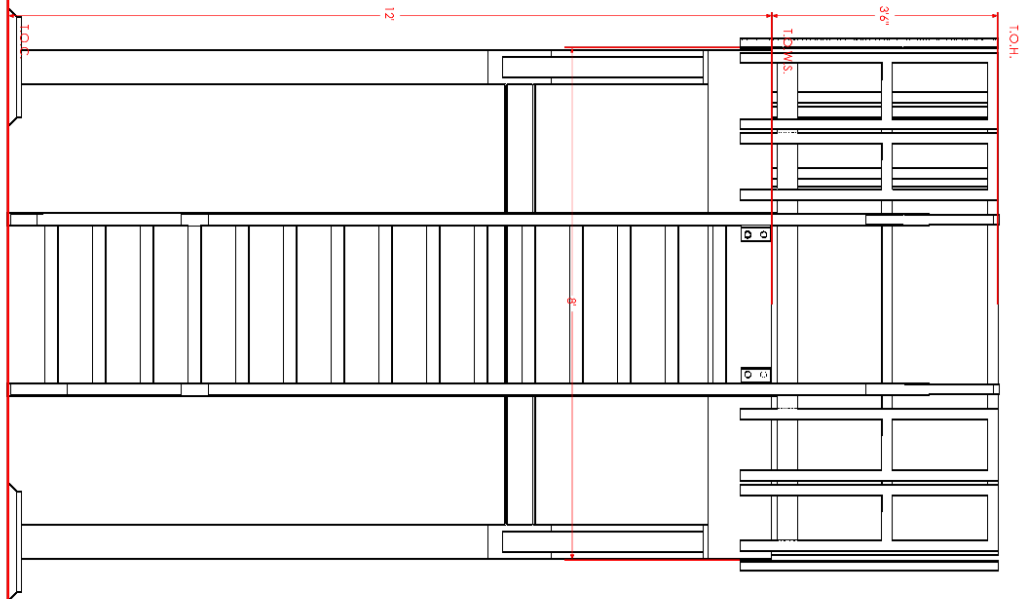
SHEET

4

REV

1

FRONT ELEVATION PLATFORM
GANGWAYS NOT SHOWN



SafeRack[®]
ORANGE. SAFETY HAS A NEW COLOR.

730 Electric Drive,
Sumter, SC 29153

DRAWN BY

Ernie Quinque

APPROVAL (SIGNATURE)

ALL INFORMATION CONTAINED
HEREIN IS CONFIDENTIAL AND
PROPRIETARY AND MAY NOT BE
DISCLOSED IN ANY FORM
WITHOUT PRIOR WRITTEN
CONSENT OF SAFERACK

TITLE

Cross Sections (Typical Tower)

QUOTE #

SA-1996

CUSTOMER

Test Name

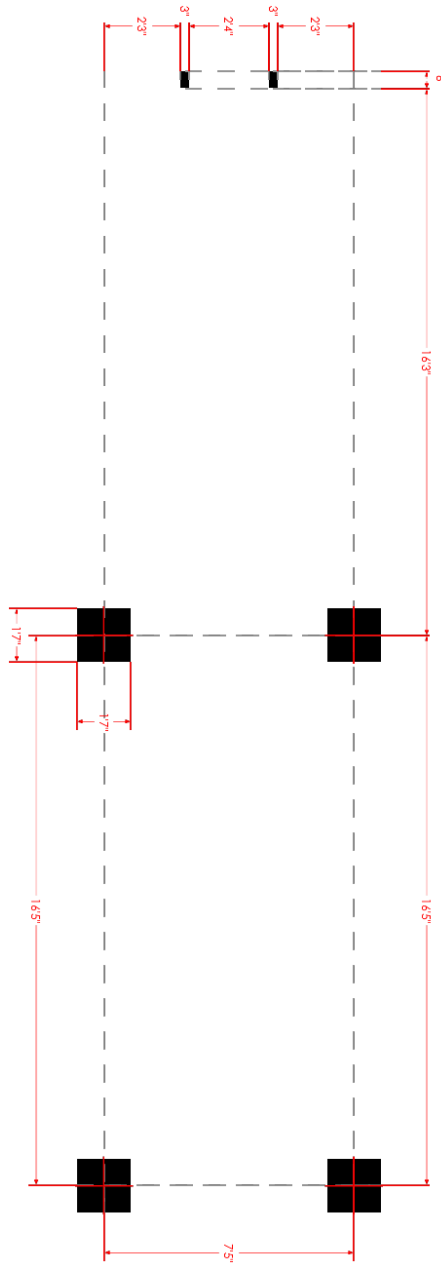
SHEET

5

REV

1

PAD LAYOUT (TWO-LEG)



730 Electric Drive,
Sumter, SC 29153

DRAWN BY

Ernie Quinque

APPROVAL (SIGNATURE)

ALL INFORMATION CONTAINED
HEREIN IS CONFIDENTIAL AND
PROPRIETARY AND MAY NOT BE
DISCLOSED IN ANY FORM
WITHOUT PRIOR WRITTEN
CONSENT OF SAFERACK

TITLE

Pad Layout Tower

QUOTE #

SA-1996

CUSTOMER

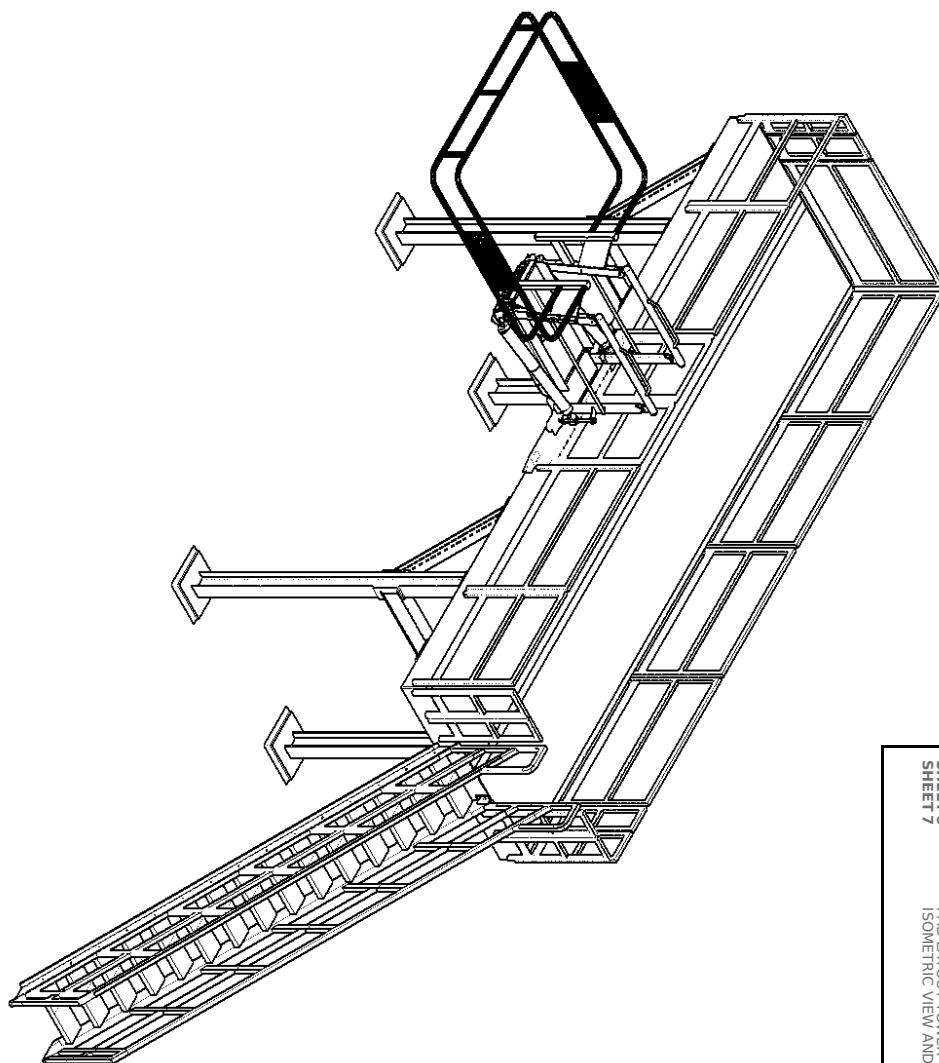
Test Name

SHEET

6

REV

1



LEGEND	
SHEET 1	MULTIPLE PERSPECTIVES
SHEET 2	SINGLE PERSPECTIVE
SHEET 3	PLAN & ELEVATION VIEW TOWER
SHEET 4	CROSS SECTIONS (GANGWAYS WORKING AND STORED)
SHEET 5	CROSS SECTIONS (TYPICAL TOWER)
SHEET 6	PAD LAYOUT TOWER
SHEET 7	ISOMETRIC VIEW AND NOTES

APPROVAL/REVIEW AUTHORITY NOTES

1. PLEASE REVIEW THIS DRAWING CAREFULLY.
2. THIS DRAWING REPRESENTS OUR BEST INTERPRETATION OF THE CONTRACT DOCUMENTS. IT IS NOT A GUARANTEE OF PERFORMANCE. WHEN IT IS RETURNED FROM APPROVAL IT WILL BE ASSUMED THAT ALL INFORMATION SHOWN HEREIN HAS THE AFFIRMATION OF THE APPROVAL AUTHORITY.
3. DRAWINGS SHALL NOT BE CONSIDERED "APPROVED FOR FABRICATION" UNTIL ALL "VERIFIES" ARE ADDRESSED AND ALL "SUPPLY" INFORMATION GIVEN. FAILURE TO COMPLY COULD RESULT IN DELAY OF FABRICATION AND DELIVERY OF EQUIPMENT.



730 Electric Drive,
Sumter, SC 29153

DRAWN BY

Ernie Quinque

APPROVAL (SIGNATURE)

ALL INFORMATION CONTAINED
HEREIN IS CONFIDENTIAL AND
PROPRIETARY AND MAY NOT BE
DISCLOSED IN ANY FORM
WITHOUT PRIOR WRITTEN
CONSENT OF SAFERACK

TITLE

Isometric View and Notes

QUOTE #

SA-1996

CUSTOMER

Test Name

SHEET

7

REV

1

TERMS AND CONDITIONS:

NOTES/COMMENTS:

- Some assembly required
- Quote does not include freight or export packaging (unless noted)
- Prices are in US dollars and does not include any applicable taxes or fees
- Galvanized steel specification meets ASTM 123.

PAYMENT TERMS:

SafeRack's terms are Net 30 on all approved orders under \$25,000. Orders over \$25,000 require progressive payments. Progressive payment schedule is 1/3 of balance upon placement of PO, 1/3 prior to shipment of equipment, and Net 30 on remaining balance upon shipment. Invoices are subject to a 1 1/2% late fee if payment is not received within 30 days. SafeRack invoices on partial shipments. Terms are to be determined on orders for export.

ORDER SUBMITTAL OPTIONS:

Phone Orders: (866)761-7225 Fax Orders to: (803)774-7233 Email Orders: orders@saferack.com

TERMS AND CONDITIONS:

1. Without a written acceptance of these conditions by the Buyer, placement of an order for any of the goods covered by this quotation/recommended spare parts list will constitute acceptance of these terms and conditions. The failure to object to provisions contained in a Buyer's order or other communication will not be deemed a waiver of the terms and conditions.
2. Scheduling - SafeRack will make all efforts to meet any mutually agreed upon delivery schedules; however, under no circumstances shall SafeRack be responsible for any liquidated, incidental, and/or consequential damages.
3. SafeRack, LLC is not responsible for delays in satisfying this order caused by circumstances which are unavoidable or beyond our control.
4. Typographical errors are subject to correction.
5. If approval drawings are held longer than 30 business days by the buyer or any order is placed on hold for more than 30 business days by the buyer, a price increase may be required.
6. All information supplied to the Buyer by SafeRack, LLC may contain proprietary design information that belongs to SafeRack, LLC and shall remain property of SafeRack, LLC. They may not be copied without the expressed written consent of an officer of SafeRack, LLC. All information must be returned immediately upon demand.
7. The sale of goods covered by this quotation/recommended spare parts list does not grant the Buyer any license or right of any kind under any patent owned or controlled by SafeRack or under which the company is licensee.
8. 2 Year Limited Warranty - SafeRack, LLC warrants products manufactured by SafeRack for two years from ship date exclusive of corrosion, wear, chemical attack, lack of maintenance, misuse or mechanical damage. As with any product, some maintenance and repair by the purchaser is expected. Mechanical damage is defined as damage from slamming against trucks or railcars during operation, being struck by trucks or railcars or other objects or any damage not normally expected during normal operation. Repair of mechanical damage is the responsibility of the purchaser. The purchaser's exclusive remedy is the repair or replacement of the part that has failed. SafeRack reserves the right to make any repairs with its own crew or to send parts for installation at the purchaser's expense. All repair costs must be approved by SafeRack prior to any work being performed. The cost of repair will not exceed the cost of the part to be repaired. No other warranty is expressed or implied. If SafeRack serves as a distributor for any item purchased, the manufacturer's warranty applies in all regards.
9. Returns - Returns must be in sellable condition, include written instruction authorization provided from our office, and may be subject to a restocking fee. Unauthorized returns will be refused. The buyer is responsible for any freight charges.
10. Liens - SafeRack, LLC provides final lien waivers when payment is received in full.
11. The field measurements utilized in formulating the prices for the equipment supplied by the Buyer or their representative. Any failure of the equipment to operate satisfactorily that is caused by incorrect data and/or field measurements being supplied to the Seller by the Buyer's personnel would be at the buyer's expense. This includes any changes in operating procedures, types of vehicle being serviced, or any changes to the physical surroundings which cause conditions to be outside the original field measurements that were taken. All costs associated with those changes would be at the Buyer's expense.
12. Buyer assumes liability for patent and copyright infringement when goods are made to Buyer's specifications.
13. If the Buyer cancels an order prior to its completion; the Buyer agrees to pay to Seller the percentage of the selling price based on the percentage of the completion, plus any costs for the disposal of used material. The Seller would determine the percentage of completion.
14. Indemnity - Buyer shall indemnify and hold harmless SafeRack LLC, its affiliated companies, owners, employees, agents, and successors from and against any and all claims, expenses, liability, and loss arising from claims for injury, death, or damage to, or destruction of property arising from unauthorized repair or modifications to the products provided under this purchase order/quotation, as well as failure to properly maintain said products, improper use of said products, use of said products for anything other than their intended purpose, and/or the equipment not working or functioning properly caused by a change in working parameters that were unknown by SafeRack, LLC.
15. SafeRack will allow a 14 calendar day window from the date that the shipment is ready until the day it leaves our facility. On the 15th day, storage fees will be charged to the project (with the rate to be calculated per job).

